



Re SOURCE
A Nonprofit Community Enterprise
ANNUAL REPORT 2012

2012

ANNUAL REPORT 2012: MEASURING OUR IMPACT

1.4 million items and 5,264 tons of waste diverted and used in the relief of poverty. 7 million dollars worth of household goods and building materials salvaged and reused locally. 4,619 individuals and families given essential goods. 80 units of affordable housing built, rehabbed or weatherized. 122 trainees placed in jobs or college. These are some of the major impacts ReSOURCE has had across Vermont over the past five years. We measure our success using a set of indicators that cover our three mission areas--environmental stewardship, job training and poverty relief-- as well as indicators of long term sustainability.

These indicators make up ReSOURCE's Social Balance Sheet and illustrate the true impacts of our programs and services as well as the interim measures of process and progress that relate to these impacts. For example, by tracking how many trainees we enroll, how many graduate from our programs, and how many obtain their high school degree and industry recognized skill certifications, we are able to measure our progress toward helping high school dropouts and other disadvantaged youth and adults overcome adversity and find success in jobs and life.

Our Social Balance Sheet also shows us that many of these indicators of success were at all time highs in 2012. We salvaged and reused 4,443,863 items, we weatherized 25 units of housing (17 of these for low income families), we completed five affordable housing rehabilitation projects --all for victims of Tropical Storm Irene-- and we gave away \$123,777 worth of essential goods to relieve poverty and provide disaster relief.

In part, ReSOURCE achieved this high level of impact by expanding our social enterprise to new locations. Our Barre capital campaign is now 90% complete and we are intent on finishing the final stage of construction this year. Despite the disruption of the construction, we have kept the store open and continue to expand services in central Vermont. And, in November, with urging and support from the Lamoille Solid Waste Management District and United Way of Lamoille County we expanded to Morrisville and are now developing both our reuse and training programs to better serve this part of the state.

Still, raw numbers don't tell the full story. Kenny Tavares was part of the YouthBuild team that worked on rebuilding low-income housing in Waterbury after Tropical Storm Irene caused extensive flooding in the area. Kenny came to YouthBuild in 2011 as a 24 year-old high school dropout, trying to support a family of four and tired of living off "the system." The construction and academic training he received with us gave him new hope. In his own words: "it is actually pretty emotional, but it feels really good, feels really nice to get out there and help people out and know that their expressions towards you are really good—that you've really helped them in a good way." Kenny shows up in our Social Balance Sheet having obtained his high school degree, an industry recognized skills certification, been placed in a good construction job, and having played a role in both the housing built and weatherized for low income families. Kenny's success is also ReSOURCE's. He is one of over 1200 trainees tracked through our Social Balance Sheet, each with their own unique story and experience. Kenny's and all of ReSOURCE's successes would not have been possible without the incredible support of so many people in the community who have donated their time, gently used goods, and money to support our programs and services to the community. Thank you.

Sincerely,



Tom Longstreth, Executive Director



ReSOURCE BOARD OF DIRECTORS:

Tom Connors
President

Ben Boshier
Vice President

Charles Ginsburg
Treasurer

Janet Poeton
Secretary

Julie Atwood

Stephen Conant

Chip Evans

Molly Gleason

Sheila Hollender

Thomas Melloni

Frank Petrosino

Representative Ann Pugh

Drew Waxler

ReSOURCE's mission is to meet community and individual needs through:

- (1) education and job skills training
- (2) environmental stewardship
- (3) economic opportunities

ReSOURCE

REUSE OPERATIONS

Household Goods and Building Materials on a mission...

In 2012 ReSOURCE opened a new Household Goods and Building Material Store in Morrisville (located at 110 Portland Street), offering a wide selection of quality used household items including furniture, electronics, computers, and kitchenware.

In addition to the 2,100 square foot retail store, the Morrisville location offers hands-on job-skills training through the Work Experience Program. The training program will expand in 2013 as ReSOURCE introduces more of its Work Experience training opportunities to Morrisville.

ReSOURCE Household Goods Stores (located in Morrisville, Barre, and Burlington) provide job and life-skills training, essential household items to families and individuals in crisis, and prevent tons of material from ending up in our landfills each year. These stores also find new homes for major appliances, computers, electronics, furniture, and industrial surplus materials, which are used by the community as arts, crafts, and educational supplies.

The Building Material Store in Burlington closes the loop in the building material reuse cycle by providing an outlet for hundreds of tons of waste that homeowners and contractors have no other way to reuse or recycle.

Homeowners, tenants, contractors, artisans, and developers all shop at ReSOURCE's Building Material Store for a variety of materials including lumber, plywood, windows, doors, sinks, lighting, architectural antiques, and other materials. Each year, through ReSOURCE's Essential Goods Program, the Building Material Store relieves poverty by donating materials to nonprofits and low-income individuals throughout Vermont.

The Waste-Not-Products showroom (located within the Burlington Material Store in Burlington) transforms salvaged building materials into unique products, such as benches, tables, birdhouses, picture frames, cutting boards, and more. Producing attractive new products from construction waste contributes to our local economy and helps low-income individuals learn new and marketable skills.

Waste-Not-Products are also sold at the Burlington, Barre, and Morrisville Household Goods Stores.





Funding our mission through environmental services...

ReSOURCE is committed to providing a self-sustaining enterprise so that its programs, people, and promises can grow and serve more people each year. One means of funding our programming is through the environmental services we offer:

LARGE APPLIANCE REPAIR - Technicians are certified in refrigeration, LP and natural gas. Large Appliance technicians service appliances through the ReSOURCE's appliance warehouse in Williston and in customer's homes.

SMALL APPLIANCE REPAIR - Our small appliance repair team tests every small household appliance (blenders, fans, radios, lamps, coffee makers, etc.) and electronic that comes into our Household Goods Stores, preparing (and repairing) them for resale. Through this service, ReSOURCE prevents tons of waste from entering our landfill.

COMPUTER REPAIR - The Computer repair shop is an A+ certified Microsoft refurbisher. Technicians offer full-service computer repair and upgrades.

DECONSTRUCTION - ReSOURCE's Deconstruction Service carefully and safely salvages building materials that otherwise would fill a landfill. Through this service the organization creates jobs, protects the environment, and relieves poverty by making these materials available at the Building Material Store.

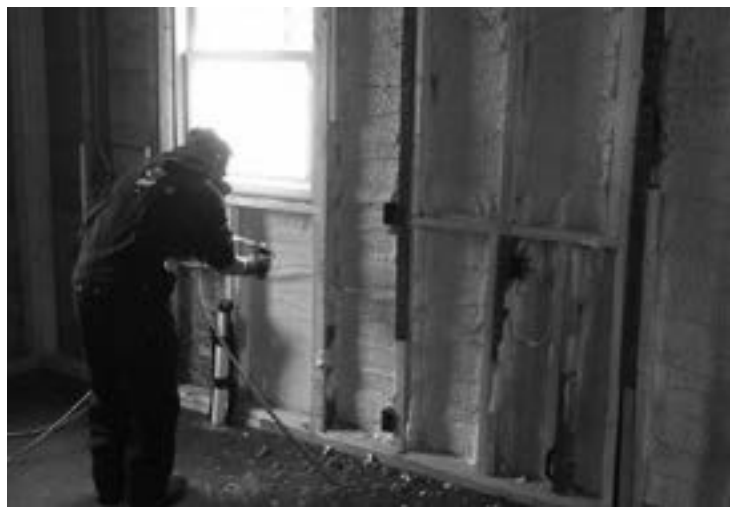
PICK-UP AND DELIVERY - ReSOURCE offers a free pick up service in Chittenden County and central Vermont, and a fee-based pick-up and delivery service in other parts of the state.

SERVICES PROVIDED THROUGH ReSOURCE YOUTHBUILD

In order to provide authentic on-the-job training opportunities to its trainees, ReSOURCE's YouthBuild Program offers the following services:

WEATHERIZATION - Comprehensive home energy audits; air sealing; moisture management; insulation; and home energy efficiency.

BASIC CONSTRUCTION - General carpentry/building with a focus on affordable housing; new construction; remodeling; and Solar PV and Solar Thermal Installation. Construction services are primarily done for low income customers.





Providing educational opportunities for youth and adults...

ReSOURCE's Training Programs serve a diverse range of individuals who need new skills and an opportunity to succeed. Most trainees find their way to ReSOURCE via word of mouth, community social service and rehabilitation agencies, and local schools. Staff work closely with these agencies and the trainees themselves to ensure that individual needs are accommodated while high standards are maintained. Since 1991, ReSOURCE has served more than 1,300 individuals in three main program areas: Apprentice-style, Work Experience, and YouthBuild.

APPRENTICE-STYLE TRAINING

ReSOURCE's Apprentice-style training program serves individuals who are ready to work but need marketable job skills and work credentials for their desired career. Some applicants have been unemployed or under-employed; others are skilled in other trades but are retraining because their jobs have disappeared due to downsizing or relocation, or need new skills after suffering an occupational injury.

Students in the Apprentice-style program receive training in two areas: technical and professional. The technical training is based on industry specific technical skills and certifications. Professional training is based on the Pillars of Success: communication, independence, positivity, reliability and professionalism. These represent the technical and professional skills necessary for success in employment. Students learn and practice these skills then demonstrate progress and mastery in real work settings.

Apprentice-style training is available in one of the following programs:

Office Administration teaches the skills that are needed to succeed in today's office environment. Training includes Microsoft Office applications, time and task management, and cash management in support of a sales and service operation. All students prepare for the Microsoft Office Specialist certification in one Microsoft application. This is a 9-month program offered in Burlington.

Major Appliance Repair teaches all aspects of diagnosing, repairing and maintaining major appliances. All students receive Type I refrigeration certification and may choose to pursue natural and LP gas certifications as well. This is a 9-month program offered in Williston.

Computer Systems Technology teaches the diagnostic skills needed to repair computers as well as how to set up and maintain networks. All students prepare for the A+ certification through hands-on learning and weekly study sessions. This is a 12-month program offered in Burlington.

Woodshop Entrepreneurial Program teaches advanced technical skills in a woodshop for those interested in exploring and pursuing business ownership in a trade. Introductory business ownership classes are offered through a partnership with local agencies. This is a 6-month program offered in Burlington.

Customer Service and Retail Management teaches skills essential for service sector positions. All students prepare for a customer service certification and deliver customer service in a variety of settings. This is a 6-month program offered in Burlington and Barre.

WORK EXPERIENCE

ReSOURCE's Work Experience program offers hands-on training through Career Start, LEAP, and Employability Skills Training programs.

CAREER START

Career Start provides customized vocational training to high school students with learning, physical, mental or emotional disabilities.

This program introduces students to traditional work settings, expectations and skills they need to successfully complete high school and transition into higher education or the working world. Students attend the Career Start program during their regular school schedule and most earn academic credit. Career Start has enrolled 99 students since beginning in 2005. In the 2011 – 2012 academic year ReSOURCE enrolled 11 students; 9 graduated, 2 quit the academic program, 3 enrolled in Career Start the following academic year and 1 Career Start graduate enrolled in the Apprentice-style training program.

LEARN, EARN, AND PROSPER (LEAP)

LEAP is a collaboration with the Gibney Family Foundation, VT Youth Conservation Corps (VYCC), Linking Learning to Life, and VT Association for the Blind and Visually Impaired. Through this month-long residential training program, ReSOURCE provides job skills training 20 hours per week to youth who are blind and visually impaired. VYCC crew leaders teach independent living skills that will be necessary for life after high school. In 2012, 4 students attended LEAP and have gone on to finish high school, enroll in college, or begin a new job.

EMPLOYABILITY SKILLS TRAINING

EST offers flexible scheduling and customized trainings for youth and adults who need an introduction to work and worksite expectations. This program also supports public assistance recipients through the Reach Up program who are completing weekly community service in order to maintain benefits while job hunting. Referring agencies look to ReSOURCE to provide a supportive but structured environment that gives participants new skills. In 2012, ReSOURCE worked with 29 Reach Up trainees who helped with community service projects and learned new job skills.





Poverty relief...

ReSOURCE's Essential Goods Program helps alleviate poverty by serving those with the lowest income—those who cannot afford the already low-cost goods at our Household Goods and Building Material Stores —while providing training opportunities to enrolled trainees, and offering items and services for sale to a wider audience at a very reasonable cost.

Success of the Essential Goods Program is measured in several ways. The number of people served, the number of partner agencies participating, the ability of the organization to use the program to train Apprentice-style and Work Experience trainees, and the amount of material diverted from landfills.

Despite the vast quantity of furniture, appliances, and housewares given away annually, the demand for support is much larger than the budget that ReSOURCE can afford.

Social service agencies apply for funding annually and request voucher budget amounts greatly in excess of what ReSOURCE can give. This annual increase in need was true even before the impact of flooding in the wake of Tropical Storm Irene which has pushed the demand for resources even higher.

ReSOURCE is committed to raising the necessary funding to meet more of the existing need and expand the number of individuals and agencies supported, particularly in central Vermont.

In 2012, ReSOURCE's Essential Goods Program provided 988 individuals and families in crisis with over \$123,326 worth of goods and services so that their basic needs were met. Included in this were 62 individuals and families who received over \$10,190 worth of vouchers for essential goods to replace items lost to Tropical Storm Irene. **This is nearly double the amount awarded to Vermonters the previous year as the complicated task of long-term clean-up and rebuilding continues across central and southern Vermont.**



JOB SKILLS TRAINING *continued...*

YouthBuild

The YouthBuild program serves 16- to 24-year-old men and women in northwest and central Vermont who have dropped out of high school and need a comprehensive development and job training opportunity. Youth are trained in construction skills while building affordable housing, learning energy efficiency skills, and working alongside ReSOURCE's Deconstruction Service.

Students earn a high school diploma or GED, while preparing for college. The curriculum integrates academics with professional and life skills. Classes are small, allowing one-on-one attention to students.

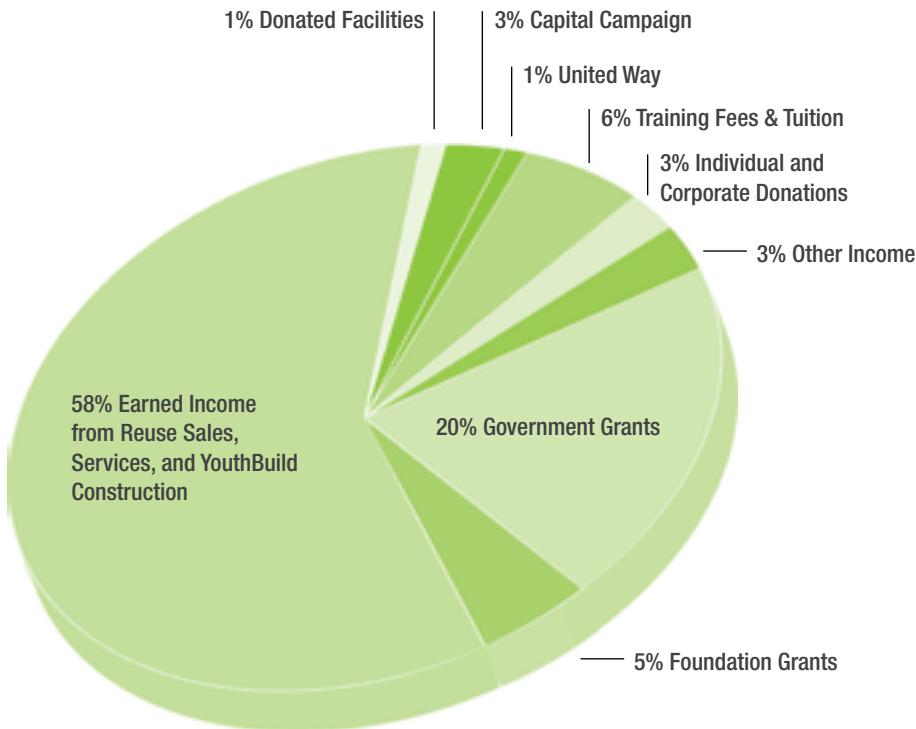
In July 2012, ReSOURCE YouthBuild received the YouthBuild USA/AmeriCorps "Leader of the Pack" Award for its service to the community of Waterbury. Through its partnership with Rebuild Waterbury, a non-profit organization formed as a result of the devastating flooding from Tropical Storm Irene, YouthBuild crews from ReSOURCE's Barre and Burlington sites engaged in a year-long flood relief effort in 2012.

YouthBuild crews were on site in Waterbury focusing all of their community service hours on helping to clear out and clean up affected residences. Just two days after the flooding occurred, ReSOURCE YouthBuild was in Waterbury helping affected homeowners salvage their possessions, clearing out basements, and tearing down first floor walls which had been destroyed by the high waters.

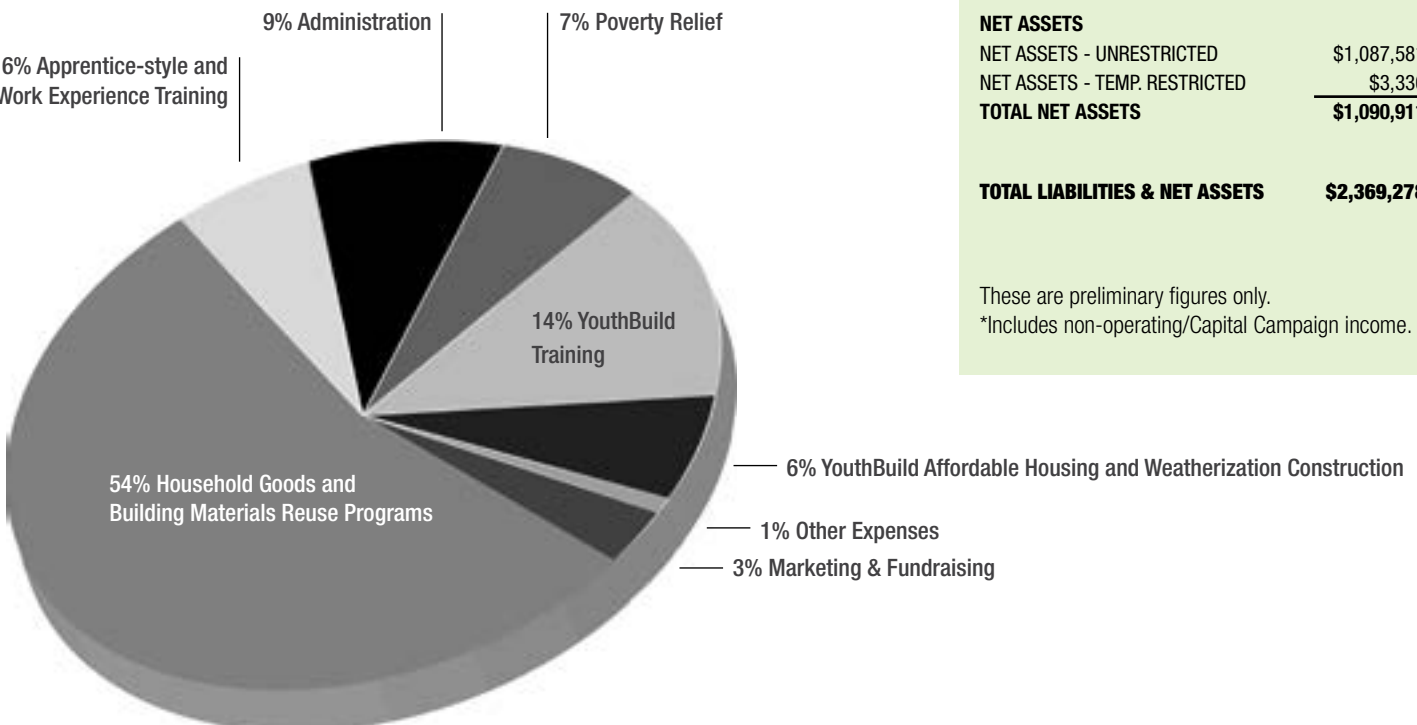
YouthBuild crews devoted over 200 working days and over 8,000 working hours towards rebuilding Waterbury, and have served as the primary labor force in the rehabilitation of 5 units of housing affected by the floods.

2012

FINANCIAL REPORT



REVENUE :: \$4,390,183*



EXPENSES :: \$4,371,193*

STATEMENT OF FINANCIAL CONDITION

CURRENT ASSETS

CASH AND EQUIVALENTS	\$142,966
RECEIVABLES	\$483,433
PREPAID AND OTHER ASSETS	\$88,683

FIXED ASSETS

PROPERTY AND EQUIPMENT, NET	\$544,782
-----------------------------	-----------

OTHER ASSETS

INVESTMENT IN 28 GRANITE STREET	\$1,103,209
SECURITY AND DEPOSITS	\$6,205

TOTAL ASSETS **\$2,369,278**

LIABILITIES AND NET ASSETS

ACCOUNTS PAYABLE	\$78,343
ACCRUED EXPENSES	\$136,124
DEFERRED REVENUES	\$1,830
NOTES PAYABLE	\$819,150
DUE TO 28 GRANITE STREET	\$242,920

TOTAL LIABILITIES **\$1,278,367**

NET ASSETS

NET ASSETS - UNRESTRICTED	\$1,087,581
NET ASSETS - TEMP. RESTRICTED	\$3,330
TOTAL NET ASSETS	\$1,090,911

TOTAL LIABILITIES & NET ASSETS **\$2,369,278**

These are preliminary figures only.

*Includes non-operating/Capital Campaign income.

CHARTING OUR STRATEGIC DIRECTION: SETTING 3-YEAR GOALS

Tom Connors, ReSOURCE Board President

In the last several years, ReSOURCE has dramatically expanded its programs and services to meet urgent community needs. With five locations in four communities, 68 staff, 7 full time AmeriCorps members, and a five million dollar budget that serves over a thousand low income families and one-hundred trainees per year, we are no longer a small nonprofit even if we retain a high degree of Yankee frugality.



Much of our growth to date has been reactive and in response to urgent external needs and requests for assistance. We took over the YouthBuild program in 2004 when the organization running it was forced to dissolve; we expanded to central Vermont when a sister nonprofit lost its roof and could no longer sustain its reuse programs; and last year we expanded to Morrisville when area leaders asked us to take a vacant space and bring our services to the community.

The staff and Board of Directors are now developing a 3-year plan that we hope will help us strategically chart a course through 2016. As part of this effort, we are evaluating our current strengths and weaknesses, as well as future opportunities and threats. This SWOT analysis will be used in conjunction with indicators of mission impact and sustainability and will be tied to an assessment of community needs. We must continue to help more people and the community by expanding our programs and environmental services. And at the same time, we must ensure long-term sustainability.

I very much hope you will continue to support ReSOURCE in the year ahead.

Sincerely,



Tom Connors,
Board President

ReSOURCE STAFF

Tom Longstreth, Executive Director

ADMINISTRATION, MANAGEMENT AND TRAINING

Milia Bell
Bridget Edwards
Warren Hardy
Jessica Estabrooks
Beatrix Hassler
Bethany Johnson
Mindy Kear
Lisa Many
David Thurlow

AMERICORPS

Donal Dugan
Elana Horwitz
Edgar Mesquita Da Costa
Leslie Ruster
Dana Williams

AMERICORPS*VISTA

Alexandra Raymond

BURLINGTON HOUSEHOLD GOODS STORE

Fran Chandler
Jim Curran
Tremaine Hart
Jasmine Hughes
Jayme Jarvis
Brooke Mitchell
Julia Tabor
Abby Teel

BARRE HOUSEHOLD GOODS STORE

Bryce Sammel
Bob Senk
Kiara Skidmore
Chris Sorrell

MORRISVILLE HOUSEHOLD GOODS STORE

Tom Benoit
Max Weaver

LARGE APPLIANCE REPAIR

Pete Bickmore
Robert Chitwood
Joey Dunbar
Charles Hall
Chad Hammaker
Jen Hayward
Jay Lafayette
Richard Martin
Pete Trombley

SMALL APPLIANCE

Oscar Jimenez
Marty LaTulippe

COMPUTER REPAIR

John Benjamin
Jason Gill
Seth Leizman
Naomi Trayah

PICK UP AND DELIVERY

Matt Brown
Jason Cayia
Kevin Ramirez
Billy Wilton

BUILDING MATERIAL STORE

Janet Babits
Tom Shea
David St. Amour
Eric Thibault

WASTE-NOT-PRODUCTS SHOP

Jeremy Smith

DECONSTRUCTION CREW

Abdi Dayo
Dan Lee
Nick Reed

BURLINGTON AND BARRE YOUTHBUILD

Rebecca Dezan
Joshua Fairchild
Jesse Greig
Brian Hsiang
Andrew Jope
Erika Lynch
William McDade
Emily McFadyen
Edgar Mesquita
Jason Monaco
Heather Newcomb
Chris Parsons

STAFF WHO LEFT IN 2012

Pam Blum
Katrina Bradeen
Tyler Brown
Thierno Diallo
Shane Kerr
Jessica Kidder
Hans Manske
Tracey McVetty
Sherman Plumley
Kevin Rheaume
Edward Siergiey
James Stotesbury
Grant Taylor

GOODNESS OF HEART**VOLUNTEERS**

Hank Alger
 Patience Ambrose
 Kelly Baillargeon
 Dylan Benoit
 Brad Bosley
 Ingrid Bostrom
 Melinda P. Carroll
 Pam Castelli
 Ricky Chabot
 Daniel Chadwick
 Andrew Chardain
 Ricky Chobot
 Steven Cohen
 Kevin Croteau
 Anthony Davey
 Donovan Desmarais
 James Dines
 Mike Farnham
 Colin Fitzgerald
 Christopher Garland
 Matt Gregory
 Bryant Hall
 Tim Haller
 Stanley Hamlin
 James Holmes
 Kari Holmes
 Angelus Innocent
 Sonja Kelley-Pruss
 Sarah LaClair
 Richard Locke
 Sarah Maher
 Christly Mandzimbala
 Buddy Meilleur
 Amanda Mikes
 Lindsey Mizell
 Crawford Morris
 Will O'Neil
 Andrew Pallas
 Felicia Pollard
 Ethan Potter
 Rodney Sargent
 Marsha Shaffer
 Judy Shepard
 Dan Tardiff
 Larry Taylor
 Jeremiah Tetreault
 Jordan Thompson
 Drew Troller-Renfrew
 Timothy Webster
 Brendan West
 Paul Wright

ABOVE AND BEYOND**VOLUNTEERS**

Dylan Andrews
 Katie Cahill
 Joshua Couture
 Shane Farrell
 Brian Goblick
 Taylor McAfee
 Andrew Meilleur
 Asim Memon
 James Meunier
 Diane Meyerhoff
 Elsbeth Mode
 Jamie Raymond
 Josh Rebick
 Ronald Rivers
 Chris Rivkin
 Joshua Sheffer
 Luis Torres
 Richard Tvorak
 Stephan Walter

COMMUNITY GROUPS

Aon Insurance Managers
 Burlington High School
 Burlington School District
 Champlain College
 Climate Summer
 Green Mountain Coffee Roasters
 Northfield Savings Bank
 RICOH
 Spectrum
 United Way
 RSVP of Chittenden County
 University of Vermont Office of
 International Education

DEVELOPMENT COMMITTEE

Katherine Arthaud
 Stephen Conant
 Tom Connors
 Molly Gleason
 Sheila Hollender
 Shona Lothrop
 Sharon Morrison
 Drew Waxler
 Claire Wilkinson
 Sabine Zerarka

BENEFACTORS (\$5,000 OR MORE)

Anonymous (3)
 Amy E. Tarrant Foundation
 Katherine Arthaud
 Ben Boshier & Anne Boshier
 Judith Buechner
 Dinah Buechner-Vischer
 Sue & John Casella
 Concept II
 Fieldstone Foundation, Inc.
 Gibney Family Foundation
 High Meadows Fund
 Johnson Family Foundation
 Lamoille Solid Waste Mgt. Dist.
 Barbara Lande Bronfman
 MacLeay Foundation
 National Life Foundation
 Northfield Savings Bank Foundation
 Elizabeth Steele
 Swenson Granite Co./Rock of
 Ages Co.
 The Richard E. & Deborah L.
 Tarrant Foundation
 United Way of Chittenden County
 Vermont Community Foundation
 Walmart Foundation
 Diana Winn Levine

ADVOCATES (\$2,000-\$4,999)

Anonymous (1)
 Bond Auto
 Bridgewood Fieldwater Foundation
 Buffum Family Foundation
 Steve & Mags Conant
 Green Mountain United Way
 Sheila & Jeffrey Hollender
 IBM Employee Contributions
 MDRC
 The Oakland Foundation
 Angelo Pizzagalli & Louise Collet
 SCHIP's

SPONSORS (\$1,000-\$1,999)

Anonymous (2)
 Carmen Beck
 Ben & Jerry's Foundation
 John Camm Broughton
 Central VT Solid Waste District
 Community National Bank
 EF Wall & Associates
 William & Debra Gottesman
 Jeffrey Hollender Partners
 Jerry Greenfield & Elizabeth Skarie
 Foundation
 Barbara Kennedy
 Chico Lager & Yvette Pigeon
 Lintilhac Foundation Inc.
 Main Street Landing
 Peter & Isabella Martin
 Toni & Robert Monsey
 North Country Federal Credit Union
 Tim Parsons & Anne Judson
 Janet Poeton
 Bob & Nancy Pope
 The Stiller Family Foundation
 Town of Essex
 Sabine Zerarka & David Finney

PATRONS (\$100-\$999)

Anonymous (13)
 Norm Akley & Lauren LaMorte
 Susan & Peter Alden
 Anne August
 Rebecca Awodey
 Chris & Deanna Bailey
 Don & Irene Ballas
 David Bardaglio & Ellen Wollensack
 Beverly Bates

Bates & Murray Inc.
 William & Elaine Beal
 Linda Beitz
 Peter & Caroline Bennett
 George Bennett
 David Blittersdorf
 Tiffany Bluemle & Liz Shayne
 Carol & Chuck Bookwalter
 Jeffrey & Jessie Bradley
 Brandthropology, Inc.
 Paul & Amy Briody
 Bristol-Myers Squibb Foundation
 Rod & Sandy Buck
 Tom Buckley & Prudence Doherty
 Robert Burge
 Bob Carmody & Mary Scripps
 Paul & Sandal Cate
 Champlain Dental Lab
 Paul Charow
 Chenette Associates
 Peter Clavelle & Betsy Ferries
 Robin & Robert Coleburn
 Richard Colton
 Thomas Connors
 Joey Corcoran
 Anne Cramer
 Donald & Lynn Cummings
 DEW Construction Corp
 Thomas & Patricia DiSilvio
 Bill Doelger & Linda Normandeau
 John & Sandra Dooley
 Robert & Marsha Drake
 John & Heather Dwight
 Rolfe & Viraj Eastman
 Carol Ellison
 Michael & Dana Engel
 Engineering Ventures
 Ralph Fine & Valerie Miller
 Rich & Jenny First
 Josh Fitzhugh & Wibs McLain
 Patricia Fontaine
 Jim & Liz Foster
 Jill Fox
 Cathy & Joseph Frank
 Gardner Insurance
 Gay & Lesbian Fund of VT
 GE Foundation
 Chuck Ginsburg
 Molly Gleason & Adam Webster
 Deborah Goewey
 Christine Graham
 Michael Green & Sarah Muyskens
 Jeannie Greenblatt & David Adams
 Bruce Haims & Judy Jackson
 Todd Harper
 Ben Haydock
 Bill & Lisanne Hegman
 Carole Hersam
 Jeffrey and Irene Horbar
 Gale Hurd
 Beal Hyde
 Sally P. Johnson
 Bruce and Jan Jope
 John Kassel & Julie Campoli
 Stephanie Kaza
 Bill Kear
 Judy & Bill Kelly
 Jennifer Kimmich
 Tony Klein & Jennifer Boyer
 A. Paul & Arlene F. Krapcho
 Terry & Brigitte Lackey
 Gregory Leech & Amy Golodetz
 Lenny's Shoe & Apparel, Inc.
 Leonardo's Pizza
 Amy Lilly & Prospero Gogo, Jr.
 Mark Lindsay
 Bruce Lisman
 Elaine Little
 Robin Lloyd
 Katherine Longstreth & David Terry
 Thomas Lucas
 Ben & Nan Mason
 Allen & Glenda Maurer
 Elaine McCrate
 Michael McGill & Johathan Scott
 Matthew McKinney
 Thomas & Julia Melloni
 Patricia & Chris Meriam
 Ron Miller
 John & Dorothy Mitchell

Kieran Moran
 Robert & Barbara Nevins
 Celia Oliver
 Kathleen Olwell & Wolfgang Weise
 John & Ann Owen
 Frank & Julie Peabody
 Scott & Roberta Pennington
 Frank Petrosino & Heidi Smith
 Jeff & Cathy Phillips
 Allen & Barbara Ploof
 Dr. Stephen Plume & Dr. Martha
 McDaniel
 Pomerleau Real Estate
 Alan & Nancy Port
 Carmen Portelli
 David Porteous & Vicky Smith
 Ann Pugh & Richard Hayes
 Andrew Raubvogel
 Markey Read & Tim King
 John & Patti Reid
 Amanda & Allen Repp
 Susan Ritz
 Donald & Mary Robinson
 Andrea Rogers & Avery Hall
 Rotary Club of Montpelier
 Lili Ruane & Win Smith
 Merryn Rutledge & Martin Poppe
 Santo Santoriello
 John Sasko
 Richard & Rita Schile
 Don & Hope Schultz
 Schultz-Blackwell Trust
 Alice Shaner-Simpson
 Robert & Anne Shapiro
 Budd Shedaker
 Shelburne Vineyard
 Marc Sherman
 Whit & Meg Smith
 Jessie Snyder
 Meg St John & Rohn Eloul
 Susan St John
 St Paul's Cathedral
 Town of Shelburne
 Dan & Janet Steinbauer
 Richard Stoner & Theresa Hyland
 Sunward Systems LLC
 R. Day Surlis
 Swenson Granite
 Gaye Symington & Chuck Lacy
 Andrew Thurber & Kit Perkins
 Leslie Tucker
 Bob & Robin Turnau
 Vermont Family Network
 Vermont Mutual Insurance Co.
 Sarah Volkert
 Betsy Walkerman
 Peter Watson
 David Watts & Lynne Bond
 Mark Westergard & Curt Moody
 Town of Williston
 Claire Wilkinson
 Ann Wittpenn
 Greg Woodworth
 Kevin & Irene Wrenner
 Robert Wright & Sylvia Knight
 Sandy & Margie Zabriskie

FRIENDS (UP TO \$99)

Anonymous (16)
 Eric Adler & Susan Yuan
 Jake Agna & Patty Tobias
 Sharon & Tom Alderman
 Jane Banks
 Elizabeth Bassett & John Pane
 Melinda Bedia
 Michael & Alice Beisiegel
 Tim and Susan Benoit
 Margie Berger
 Debby Bergh
 Faith Bieler
 Donn & Jeanne Blodgett
 Scott & Carol Boardman
 Boutin Family Foundation, Inc.
 Kitty Boyan
 Myra Brainard
 Barbara Bull
 Buffy Cafilich
 Nat Caldwell
 Connie & John Carpenter
 Ted & Anne Castle

Ralph & Loisanne Cefarello
Lori Chalmers
Mal & Sarah Chamberlain
Laurie Childers
David & Rita Clark
David & Patrice Colander
Conant Metal & Light, Inc.
David Connor & Ann Stanton
Robin Connors
Catherine Cooke
Katherine Coppock
Janice Couture
Anne Cummings
Ann Curran
Dana Davis
Gerald S. & Karin N. Davis
Jessica Debasio
Patricia Di Stefano
Judy & Don Dickson
Chris & Andrea Donahue
Brian and Penny Dooley
Michael & Belinda Doran
Bill & Olene Doyle
Alfred & Sally Duval
Joe & Betty Dye
Jessica & Ben Edgerly Walsh
Elizabeth Eklof
Russell & Nancy Ellis
Energy Co-op of Vermont
Gail Ernevad
Travis & Erin Fahey
Sam Falzone
Barbara Fitch
Ruth Forgy
Harry Frank & Enid Wanacott
Gary Franklin & Shanley Hinge
Larry and Annette Gann
Kate Gardner
Peter & Phyllis Geiss
Barbara Glade
Steven & Jane Goodman
Debbie Goulet
Chris & Nancy Graff
Valerie & William Graham
Granite Hills Credit Union
Martine Gulick
Melanie Gustafson & David Scrase
Timothy Gutchell
Sandra Hamlet
Recille Hamrell
Patricia Hanson
Nick & Sue Hardin
Thomas & Dana Hark
Roberta Haskin
Bobbee Hirsch
Con and Jeanette Hogan
Debi Hron
Scott and Cheryl Hulbert
Sam & Margaret Hutchins
Carl & Linda Johnson
David Johnson
Paul & Karen Kelley
Abby Knapp
Maryse Laforce
Paul Lamberson & Ruth
Burack-Lamberson
Pam Letourneau
Thomas Letourneau
Carolyn Lettieri & Charles Elioseff
Anderson Leveille & Brenda Convery
Jackie Levine
Barbara & Marty Lewinter
David Lines & Sarah Kenney
Ann Livingston
Carolyn Long
Jeanne Lynch
Jeff Lyon
James & Kathleen Manchester
Marcia Mason
Jay Matthews
Michael & Elizabeth Mayor
McKesson Foundation
Karin McNeill
Flo & Gene Meiler
Ed & Peg Merrens
Nicholas Meyer
Kristi Miller
Donald & Stephanie Miner
Katharine Montstream &
Alan Dworshak

Jack Moore
Ira Morris
Sharon Morrison & Robert Shapiro
John & Tricia Morton
Jim Moulton & Serena Eddy-Moulton
Diane Muhr
Sherrill & Andrew Musty
Robert & Patricia Neely
Ann O'Brien
Neil & Jennifer O'Sullivan
Amy Otten
Alice & John Outwater
Michele Patenaude & Ralph
Montefusco
Jenane Patterson
Lucy Patti & Bill Merrylees
Ivan & Rose Pels
Jesse Pelton & Alison Watt
Peter Perkins & Wallace Mellor-Perkins
Mark Peterson & Keren Turner
Melinda & Jeff Petter
David Pierson & Jane Melrose, L.Ac.
Pam & Bill Piper
Kathleen Preis
Daniel and Denise Pudvah
David Racusen
Amey Radcliffe
Robert Reiber & Mary Rogers
Christopher & Nancy Reilly
Zoe Richards & Joshua Brown
Diane Richardson
Margaret & Alban Richey
Fenn Rider
Todd Rivers
Pat Robins & Lisa Schamberg
Rick & Lillian Robinson
Don & Lucille Sargent
Lila Shapero & Wayne Serville
Sarah Sherrill
ShoeLess Management
Alison Soule
George Spaulding
Susan & Jeb Spaulding
Chapin Spencer & Rebecca Grannis
Brian & Lorri Sperry
Anne-Seymour St John
Mark Stephenson & Linda Jones
Ann Maria Stillwell
Kelly Stone
Sarah Suscinski
Julie Taylor
Linnea Taylor
Rachel Thomas
Claire Trepanier
India Tresselt
Marty Trombetta & Phil Cloutman
Katy Tyner
University of Vermont CDAE Dollar
Enterprise
Barbara Vickery
Litta Vigne
Dan Vogt & Jennifer Paone-Vogt
Annie & Steven Voldman
Barry & Marilyn Wallace
Washington County Diversion
Program
Albert & Joyce Weldon
Jeanette Westover
Stuart & Sarah E. Williams
Lisa Winkler
Stephanie Winkler
Barbara Winters & Donald Dresser
Stephen Wise Tulin
Mark Yorra & Kit Gates

IN-KIND SERVICES AND DONATIONS

Anonymous (1)
A Little Something
A Single Pebble
Advance Music
Jake Agna & Patty Tobias
Agway
Aikido of Champlain Valley
American Apparel
American Flatbread Burlington Hearth
Apple Mountain
Ark Veterinary Hospital
Asiana House
Barnes & Noble

Bertha Church Intimate Apparel
Bolton Valley Ski Resort
Ben & Anne Boshier
Boston Red Sox
Bueno y Sano
Burak, Anderson & Melloni
Burlington Public Works
Carhartt
Steve & Mags Conant
Thomas Connors
Cumberland Farms
Cynthia's Spa
Democracy for America
Eastern Mountain Sports
Echo Lake Aquarium
Engineering Ventures
Essex Resort & Spa
Executive Car Care
Fairfield Inn
Caitlin Falzone-Leonard
Flynn Arts
Chuck Ginsburg
Kevin Ginter
Girlington Garage
Great Vermont Corn Maze
Green Mountain Coffee Roasters
Gringo Jack's
Heart of the Village Inn
Hildene, The Lincoln Family Home
Homeport
Jeffrey Hollender Partners
Joe's CSA/ Screamin' Ridge Farm, Inc
Holly & Dennis Jones
Justin Cruz Salon
Kelly Office Systems
Kiss the Cook
Klinefelter Studio
Klinger's Bread Co
Lake Champlain Chocolates
Lake Champlain Shoreline Cruises
Lang House Bed & Breakfast
Leunig's Bistro
Magic Hat Brewing Co.
Merrill's Roxy Theatre
Montshire Museum of Science
No School Snowboard Shop
Noyes Automotive
PC Construction Company
Petra Cliffs Climbing Center
Pulcinella's
Lili Ruane & Win Smith
Seventh Generation
Shelburne Meat Market
Shelburne Museum
Shelburne Vineyards
Skinny Pancake
SOYO
Spectrum Youth & Family Services Inc
Sports & Fitness Edge
Stowe Soaring
Switchback Brewing
The Crate Escape
The Farmhouse Tap & Grill
The Soda Plant
Dave Thurlow
Trader Duke's Restaurant & Lounge
Uncommon Market
Vermont Lake Monsters
Vermont Mountaineers
Vermont Print and Mail
Vermont Smoke & Cure
Woolen Mill Health Club

COMMUNITY BUSINESS PARTNERS

Aldrich Library
All Metals Recycling
Allen Lumber
Arguin Real Estate
Barre Electric
Bellevance Trucking
Big Lots
Brandthropology
Burlington Bedrooms
Burlington Fire Dept.
Burlington Police Dept.
Burlington Schools
Carnegie Fabrics
Casella Waste Management

Central Vermont Solid Waste
Management District
Chittenden Solid Waste District
City of Barre
Cocoplum Appliances
Copley Terrace
Copy World
Costco
Country Home Center
CVMC
CVOEO
Efficiency Vermont
Fuse Marketing
Gallagher Flynn & Co.
General Dynamics
Good Point Recycling
Goodrich Company
Got Junk?
Heaton Woods
Hilltop Inn
Hunger Mountain Coop
Husky in Milton
IRN The Recycling Network
Kellogg-Hubbard Library
Lowe's
Lund Home
Mad House Munchies
Mike Bourne of Bourne's Energy
Montpelier Construction
National Life Group, Inc.
Northfield Savings Bank
Norwich University
Old Labor Hall
Re-Bop Records
Simpson Sales and Service
Smugglers' Notch Resort
Spaulding High School
Stowe Best Western
Studio Place Arts
The Drawing Board
The Manor
Thomas Hirchak Company
Total Home Center
Trapp Family Lodge
Twin City Subaru
U32 High School
University of Vermont
VEIC
Vermont Furniture Design
Vermont Works for Women
Vermont Youth Conservation Corps
Wall Goldfinger
Washington County Youth Service
Bureau
Wells Fargo
Women and Children First

DECONSTRUCTION CHAMPIONS

Karen Anderson
Don & Cheryl Appe
Bob Atchinson
City of Barre
Donald Bortz
Kim Brown
Building Heritage
CSWD
Dartmouth
Enzo Dimagio
Susan Els
Evolution Physical Therapy and Yoga
Michelle Gonzalez
Sheryl Graves
Danielle Hogan
Kelliher Samets Volk
Tony Martin
Barry Nelson
Jamie Newhall
Andrew Peterson
Red House Builders
Rob Ricketson
Rockpoint School
Mike Russell
Susan Weeks

Note: This list reflects donations received between January 1, 2012 and December 31, 2012. Please contact us if you notice any inaccuracies or omissions.

ReSOURCE is a registered nonprofit. Donations are tax deductible. Thank you.

ReSOURCE

2012 RESULTS

Annually, ReSOURCE tallies statistics that provide indicators of our success in terms of reuse, poverty relief, and training.

REUSE

In 2012, ReSOURCE assessed, refurbished, and either donated or sold:

244	Washers
157	Dryers
215	Range Ovens
216	Refrigeration Units
37,967	Books
22,917	Dishes
573	Computers
2,182	Beds
724	Sofas
905	Dressers
2,725	Tables
1,749	Cabinets
63,539	Linear Feet of Lumber
1,512	Doors
1,279	Windows
1,391	Lighting Fixtures
378	Sinks
445	Shutters

Thanks to all of our materials donors and partners, more than **1,018** tons and **443,863** items were diverted from the landfill and put to good use. Thank you!



POVERTY RELIEF

ReSOURCE's Essential Goods Voucher Program is geared toward aiding our community in its efforts to relieve poverty. We do this by providing low-income families with some of the essential items that are needed in a home.

The value of goods ReSOURCE donated in 2012 was \$123,376.



TRAINING

ReSOURCE's training programs saw exciting increases in 2012. Four new programs started in three locations including our newest location in Morrisville. As a result of these new programs, total enrollment in 2012 increased 65% from 2011.



IN 2012:

144 TOTAL ENROLLEES

89 WORK EXPERIENCE ENROLLEES

55 YOUTHBUILD AND APPRENTICE-STYLE ENROLLEES

45 CERTIFICATIONS AND DIPLOMAS EARNED

22 JOB AND/OR ADVANCED EDUCATION PLACEMENTS



Nonprofit Org.
US Postage
PAID
Burlington, VT
Permit #158

Name
Business
Address
City, State Zip



BURLINGTON • BARRE • MORRISVILLE • BURLINGTON • BARRE • MORRISVILLE • BURLINGTON • BARRE • MORRISVILLE